

## MEMBERSHIP FORM

**Please Check:**

- New Membership Application
- Renewal of Membership
- Contribution

**Check Membership Category:**

*(Rate given is for a one-year membership.)*

- Individual \$15
- Family \$25
- Student \$5
- Business/Organization \$50
- Contributing \$150 or over

**NAME** \_\_\_\_\_

**Address** \_\_\_\_\_

**City** \_\_\_\_\_

**State and Zip** \_\_\_\_\_

**Telephone** \_\_\_\_\_

**E-Mail Address** \_\_\_\_\_

**Checks are Payable to:**

**Cranberry Twp. Historical Society**  
PO Box 1931  
Cranberry Twp., PA 16066

*"Even Our Dues Are Historical"*

### **Cranberry Township** was founded in

1804 when Connoquenessing Township was being divided into smaller administrative units. The area was still so sparsely settled that no individual had attained sufficient prominence to bestow his family name on the newly-created township. So, they called it Cranberry Township after the native wild cranberries growing along Brush Creek.

The early cranberries disappeared by about 1900. Marshlands were being drained for farmland and the last of the cranberries died out during the drought and heat waves of the 1880's.

Cranberry plants have been reintroduced to the Township in the North Boundary Park, the Penn State Trial Gardens at the Municipal Center and in private landscapes.

While neighboring Zelenople and Harmony were prospering, Cranberry Township remained an isolated rural backwater in the extreme southwest corner of Butler County. On early road maps it was identified as Criders Corners, the tiny crossroads settlement with which the Township had become identified.

# JOIN TODAY



# CRANBERRY TOWNSHIP HISTORICAL SOCIETY

- FOUNDED IN 1988 -

Cranberry Twp. Historical Society  
PO Box 1931  
Cranberry Township, PA 16066

Phone: 724-538-4681

# Cranberry Township Historical Society

The Cranberry Township Historical Society, founded in 1988, offers free periodic historical programs to the public. They provide docents for the one-room Sample Schoolhouse located at the Cranberry Township Municipal Center. Speakers are available to speak to other organizations as requested. The Society publishes and offers for sale various historical publications and other memorabilia. A newsletter is published several times per year.

Cranberry Township Historical Society is a non-profit organization. They are dedicated to identifying, preserving, and promoting public awareness of historical sites, landmarks, placenames and traditions.

Open business meetings are held the second Tuesday of the following months: February, April, June, August, October and December. The meetings are held in the Municipal Center at 7:00 pm. Programs for members and the public are offered in January, March, May, July, September, and November.

## Consider Joining Today

*"We can't do it without you"*

<http://www.twp.cranberry.pa.us/information/sampleeschool/sampleeschool.html>

## Sample one-room

**Schoolhouse and Museum**  
2525 Rochester Road  
Cranberry Township, PA

### June through September

regular hours:

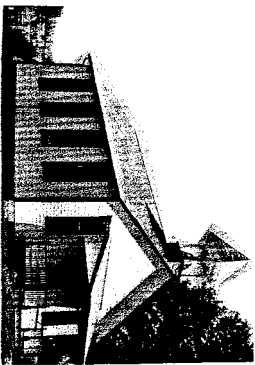
**Wednesday afternoons 12:30-3:00**

**Saturday mornings 10:00-12:30**

**Groups & alternate times by**

**appointment**

**Contact Number 724-538-4681**



The **one-room Sample Schoolhouse**, built in 1874, was moved from its original location on Rowan Road to its new home at the Municipal Center in 1999. The building was restored to its original appearance and was dedicated in 2002.

It is open to visitors from June through September and to groups by appointment throughout the year. Third graders from local schools attend class at the school for a portion of a day each school year.

As of January 2006, the Schoolhouse is home to a collection of Native American relics unearthed by an archeological dig at the site of the future Graham Park.

Comments/Suggestions:

---

---

---

---

---

---

---

---

Areas of Interest:

---

---

---

---

---

---

---

---

I Would Like to Volunteer to:

---

---

---

---

---

---

---

---